

M A R C H 3 , 2 0 1 7

Watershed Week in Review

Llano River Watershed Alliance

Teachable Moment in Mason

The City of Mason recently bulldozed the riparian area of Comanche Creek to 'protect' the new bridge across the creek from debris build up.

As most readers of this newsletter know, it is much better to leave large woody debris in riparian areas to dissipate the energy from a flood.

Members of the Alliance will begin to work with the City to come up with better solutions in the future.

700 Springs Tour

This year's tour of 700 Springs will be Saturday, April 29th.

As in years previous, the tour will begin at the Kimble County Courthouse in Junction at 10am sharp and caravan to the 700 Springs Ranch.

Correction

Ginger Andrews was incorrectly identified in last week's newsletter as the moderator for the Kimble County, Texas ~ History and Genealogy Facebook Page.

Our apologies for the oversight



Llano Earth Art Fest returns March 10-13

LLANO EARTH ART FEST

March 10-13, 2017

Grenwelge Park, Llano, TX

TICKETS \$5 ADVANCE/\$10 GATE

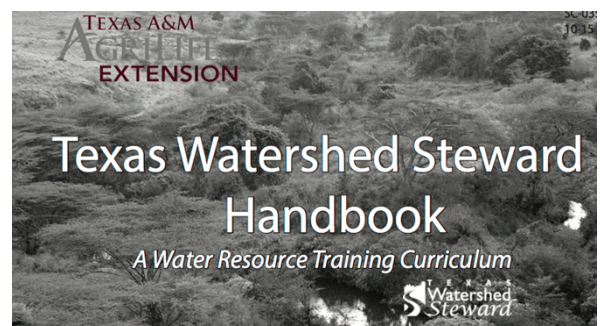
[Click here for more info](#)



Texas Watershed Steward Program returns to Junction

The Texas Watershed Steward Program will be returning to Junction on May 6th from 8:30 to 12:30 at the Llano River Field Station.

The Watershed Steward program is a statewide educational program designed to improve the quality of Texas' water resources by educating and informing local stakeholders about their watershed.



The program is sponsored by Texas A&M AgriLife Extension Service, Texas State Soil and Water Conservation Board, and the Llano River Field Station in conjunction with the recently approved Upper Llano River Watershed Protection Plan.

[For more information and to register...](#)

Farmers learn about no-till farming

More than 200 farmers recently attended the Soil Health Short Course to learn the benefits of the no-till farming method.

Farmers historically have been taught for decades to turn the soil and keep it clean around their crop. Soil scientists say that may not be what is best for the soil.

Jule Richmond with the National Association of Conservation Districts said, “Now we have realized that you can not do any plowing. You can leave the stubble on top of the ground that you can see out in this field here from last year’s crop.” The left over crop works as a mulch, providing shade to the soil preventing evaporation and keeping the soil cool.



[Watch News6 video](#)

Integrating monarch and quail habitat

Both northern bobwhite and monarch butterflies have significant cultural importance in Texas and the United States as a whole, but both also are being carefully monitored as species of conservation concern due to declines in the wild.

Though butterflies and quail are vastly different on the surface, there is some overlap between habitat requirements for each, and it may be possible to use land managed for quail to help monarchs as well with only a few changes.



[Read more from Texas A&M Agrilife](#)

Weekend Programs at South Llano River State Park



Life's better outside.®



Like us on Facebook!
Facebook.com/SouthLlanoRiver

Family Park Programs

South Llano River State Park

Phone: (325) 446-3994

Bird Walk

Friday, March 3rd, 8:30 am - 9:30 am

Meet at the Fawn Trail parking lot
(behind Park Headquarters)



Birding is terrific at South Llano River State Park. Join us as we walk an easy trail, sit in the blind, and see what we can spot! Good walking shoes and drinking water are recommended, and dress for the weather! Binoculars provided, or bring your own.
All ages and skill levels welcome.



Geocaching 101

Sunday, March 5th, 3:00 pm - 4:00 pm

Meet at the Walk-in Campground parking lot

Experience the fun of geocaching, a high-tech treasure hunt you can do anywhere in the world using a hand-held GPS unit or your smartphone! Loaner GPS units will be provided for this activity. Good walking shoes and drinking water are recommended, and dress for the weather! All ages and skill levels welcome.

Park programs are open to the public and free with park entrance fee