

M A R C H 1 3 , 2 0 1 5

South Llano Watershed Alliance

# Watershed Week in Review



If you appreciate the Llano and all it has to offer, please consider joining the South Llano Watershed Alliance—soon to be the *Llano River Watershed Alliance*. Our group of volunteers works to preserve and enhance the Llano River by encouraging land and water stewardship through collaboration, education, and community participation [Click here for application form](#)

## The flow of 700 Springs

The US Geological Survey has been taking periodic measurements at 700 Springs since 1959. The most recent measurement was taken last month. What was the flow and should we be concerned?

**Continued on next page**

**Save the Date!**

Oasis Fire Restoration  
Workshop

April 18, 2015

700 Springs  
Tour

April 25, 2015

**Thanks to our most recent sponsors:**

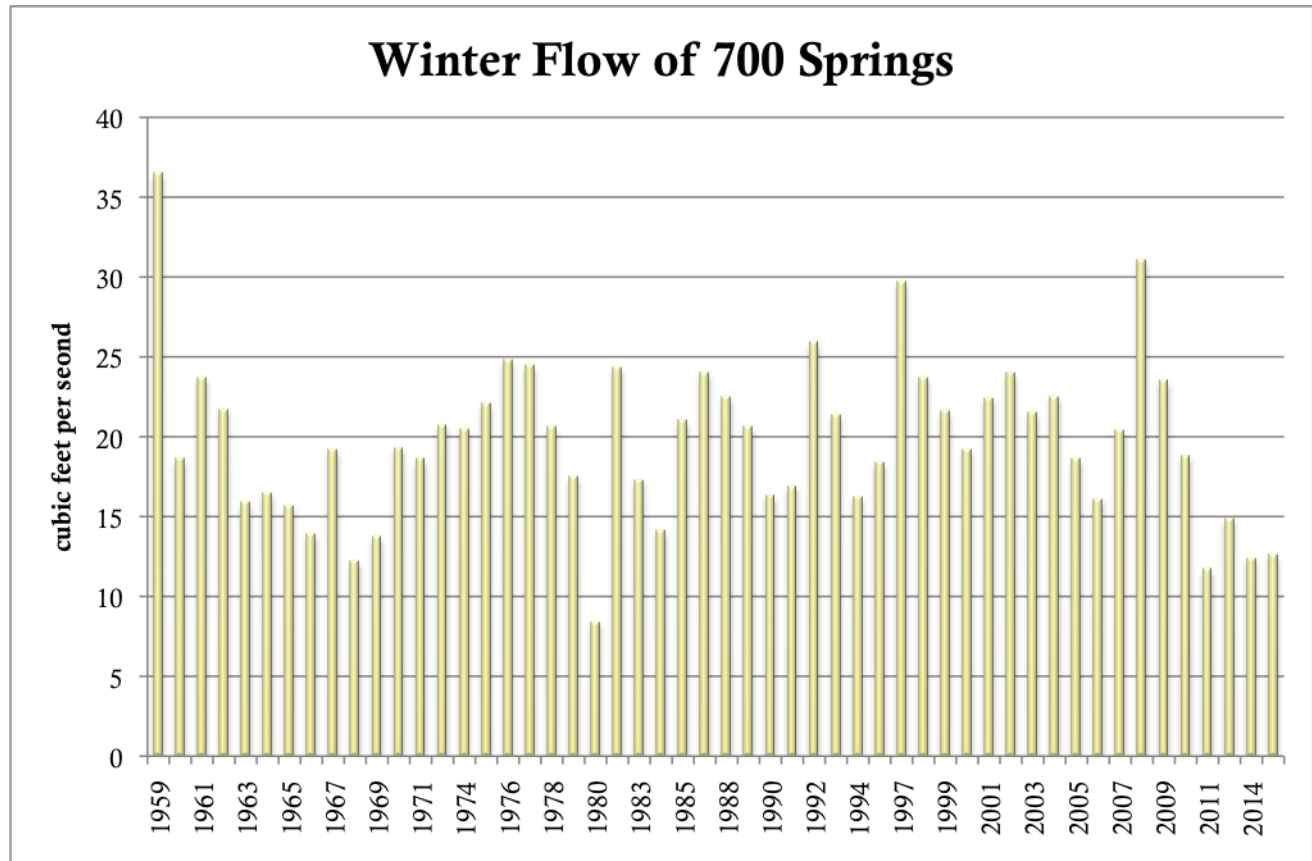
[David Langford-Western Photography Company](#)

[Cotterrell Ventures, Ltd.](#)

James C. Murr

Ruth Bowman Russell

## ...700 Springs



There is not a permanent stream gage (like those found on the Llano River at Junction, Mason, and Llano) at 700 Springs, but USGS periodically takes field measurements at the Springs.

On February 10, 2015, the flow of 700 Springs was 12.6 cubic feet per second (cfs). This is up slightly from the December 15, 2014 measurement of 12.3 cfs and the February 27, 2014 measurement of 12.4 cfs.

The lowest measured discharge of 700 Springs was 8.4 cfs in February of 1980. The highest measured discharge occurred in February of 1973, at 42.5 cfs.

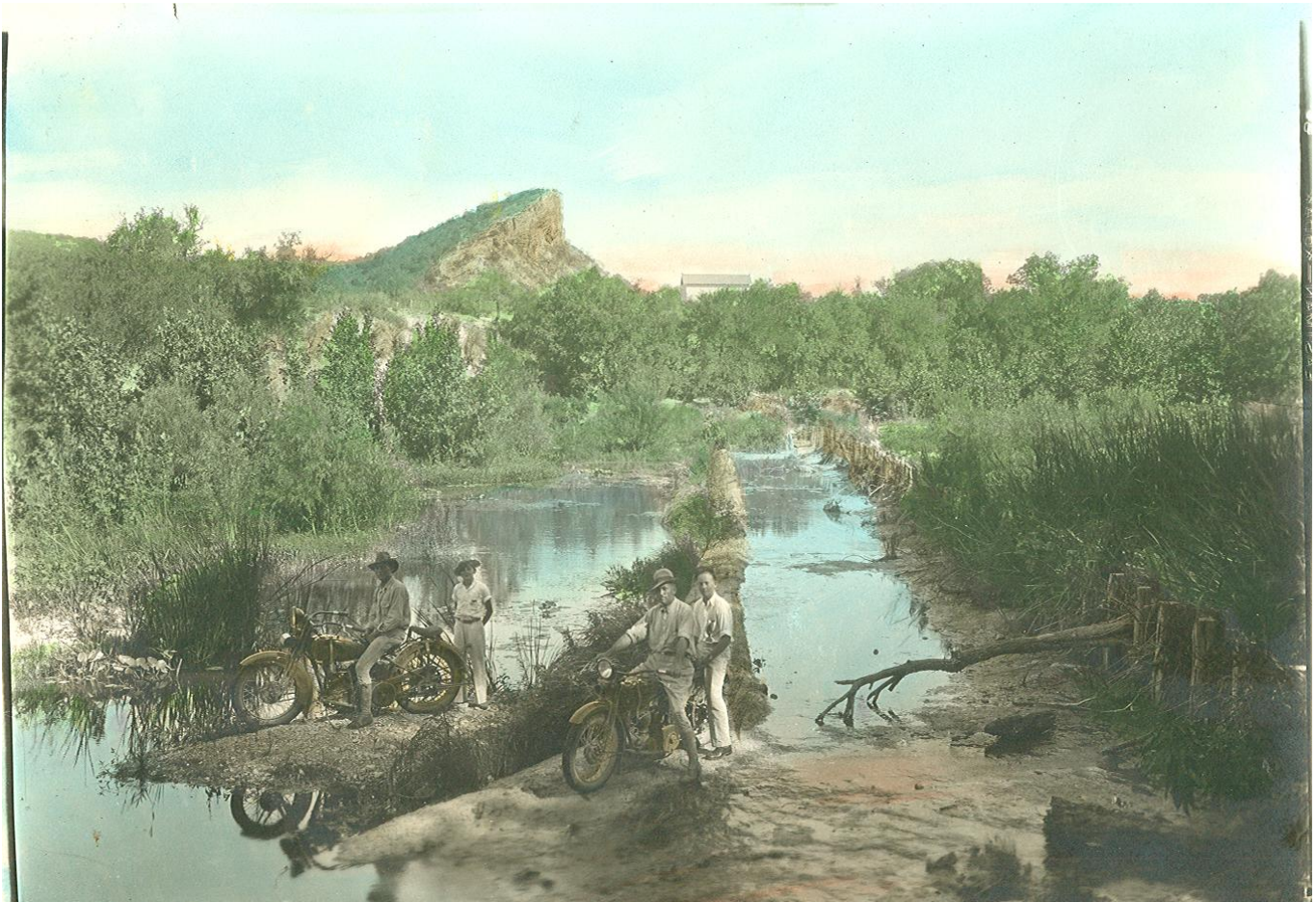
The above chart shows the winter measurements for 700 Springs since 1959. As mentioned, the lowest flow ever recorded

was 1980; that year flow of the Llano River at Junction dropped to 41 cfs.

The average of the last four winter measurements is 12.9 cfs, the lowest four-year average recorded. In 2011, the winter flow at 700 Springs was 11.7; that year the flow dropped to 32 cfs. The chart below tells the 'rest of the story'.

Year	Lowest Flow of Llano River at Junction (cfs)
2011	32
2012	36
2013	38
2014	41

## Llano River Irrigation and Milling Co-Junction



Last week's edition of the newsletter showed a 1921 map of the Llano River Irrigation & Milling Company. This undated photo from Kimble County Historical Society shows the ditch at Morgan Park, south of the courthouse square. The Junction landmark, Lover's Leap, is seen in the background.

## For our birding friends

*In these days of the internet, one gets to see many remarkable nature photographs, but this photo of a nesting falcon is perhaps the most remarkable nature shot I have ever seen. I hope you enjoy it as much as I did. [see photo](#)*

## What is the best brush management approach for you?

*Our friend Steve Nelle prepared this handy checklist of Brush Management Guidelines and Considerations. What is it that you want to manage for? Livestock? Wildlife? Water? Aesthetics?*

[Check out the checklist](#)



## Video Series on Stream Restoration

*This three-part video series highlights how streams behave in nature, how things can go wrong, and what we can do to help.*

[Watch videos](#)



## Results from Texas Roundtable on Water

*Over a period of 18 months, a varied group of water policy folks in Texas agreed upon a set of broad principles and policy recommendations for water management in Texas. The topics cover everything from Surface and Groundwater Management to Land and Watershed Stewardship.*

[See recommendations](#)