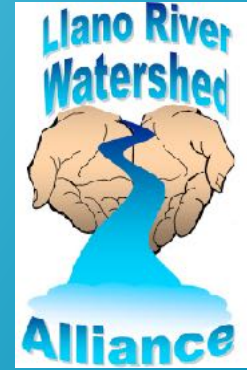


# WATERSHED WEEK IN REVIEW



## Space Still Available!

### 3rd Annual South Llano River Birding Festival

Registration space is filling quickly for the 3rd Annual South Llano River Birding Festival.

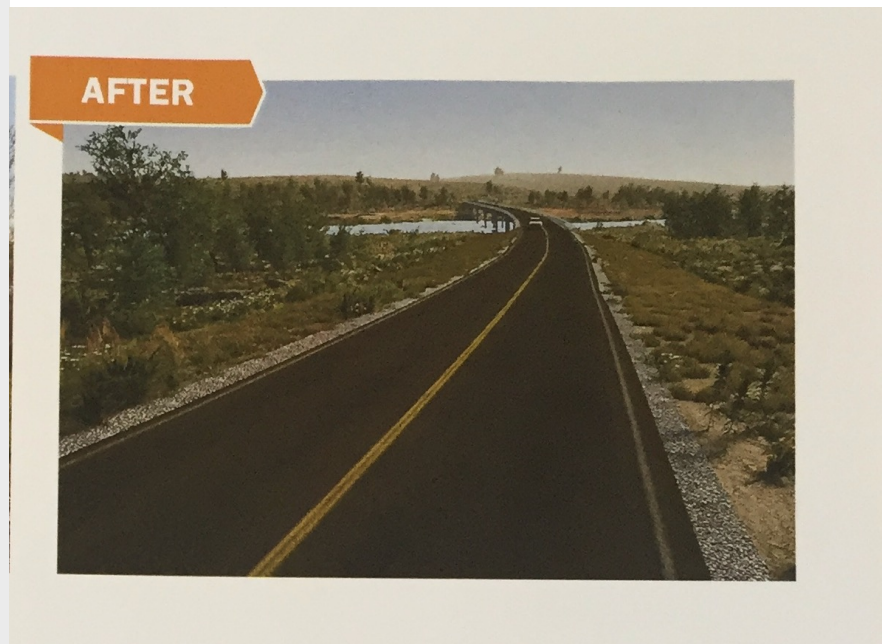
April 24-26, 2020

Saturday will be filled with a variety of birding actives and then a banquet. Sunday is the Big Sit! **Some events are already full.**

**Register today!**

Information &  
Registration

## White's Crossing Bridge



About 50 residents and river users gathered at the Mason County Courthouse this past Monday to learn more about TxDot's proposal to construct a new bridge at White's Crossing on the Llano (RR 1871). Above is an artist rendering of the proposed bridge, to be constructed at an elevation of 15 feet above the river. See meeting handout...

Once the bridge is completed, TxDot currently plans to remove the old bridge as well as the asphalt on the approaches, leaving only a dirt...

## TxDot Meeting - New White's Crossing Bridge

... approach for river access. While the County Judge noted that they were willing to run a grader on the access road when they were in the area, many present at the meeting asked if there is a more durable solution regarding access.

As the meeting was part of County Commissioner's Court meeting, public comments were limited to three minutes, making it difficult to have a meaningful dialogue with TxDot. But at least a dialogue has been initiated.

The Alliance will continue to work with all interested parties to pursue an access solution that works for the community. When TxDot was constructing the Flat Rock bridge in Junction, the agency worked with the local community, including the Alliance, to develop adequate access for boaters. The Alliance is hoping such a solution can be found for White's Crossing. *Stay tuned...*



*Google Earth image showing approximate location of 15 foot bridge at White's Crossing. The new bridge is to be located just downstream of the old bridge. Prepared by LRWA.*

## Chronic Wasting Disease Discovered in Kimble County

*From Texas Parks and Wildlife*

AUSTIN – Chronic Wasting Disease (CWD) has been discovered in a 5 ½-year-old white-tailed deer in a Kimble County deer breeding facility, marking the first positive detection of the disease in the county.

The tissue samples submitted by the breeding facility as part of routine deer mortality surveillance revealed the presence of CWD during testing at the Texas A&M Veterinary Medical Diagnostic Laboratory (TVMDL) in College Station Feb. 6. The National Veterinary Services Laboratory in Ames, Iowa, confirmed the findings on Wednesday, Feb. 26.

Officials have taken immediate action to secure all cervids at the Kimble County deer breeding facility with plans to conduct additional investigation for CWD. In addition, those breeding facilities that have received deer from the Kimble County facility or shipped deer to that facility during the last five years are under movement restrictions and cannot move or release cervids at this time, or they have completed the necessary testing to ensure that CWD was not transferred to their facility.

— Continue reading —

## City of Mason's History Featured

*by Michael Barnes  
Austin American Statesman*

MASON — This tidy Hill Country town is home to a mere 2,000 people, but it holds more fascinating history per square foot than almost anywhere else like it in Texas.

After spending time in January tracing the nearby James River, which flows into the Llano River just south of [Mason](#), my traveling companion and I pulled into the prosperous-looking town square to check out its museums and other historical curiosities.

[Continue reading...](#)



*Old Yeller Statue  
commemorating Llano River  
resident author Fred Gipson.*





MAR  
14

**Aliens from Planet Earth -  
Invasive Species and their  
Impact on our Rivers**

by Llano Earth Art Festival (LEAF) and  
World Rock Stacking Championships

[Follow](#)

Free

Come see us at Llano Earth Art Fest on March 14  
 where we will be talking about *Aliens from Planet Earth*

## February 2020 Park Programs

### South Llano River State Park



Life's better outside.®



Like us on  
 Facebook! Facebook.com/South

Phone: (325) 446-3994

**Skins, Skulls, and More!** - Meet at **Acorn Bird Blind**. Come see and touch animal furs and skulls. Find out what a skull can tell us about how an animal lives! **Saturday, February 29 - 10am**

**Atl What? Atl Who? Atlatl!** – Come practice your prehistoric hunting skills. Find out how hard it is to catch dinner. Meet at the **Main Day Use parking lot** (the big lot). **Saturday, February 29 - 1:30pm**