

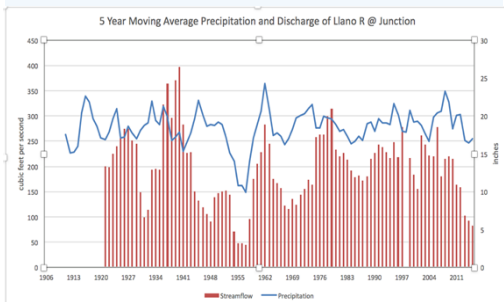
Watershed Week

in Review

January 27, 2017



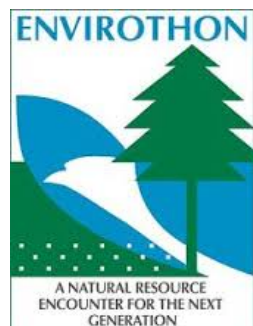
Q& A Llano River and dry times



Watershed Week in Review
readers posed two
questions from last week's
article comparing rainfall
and river discharge.

- 1) Could you highlight what years had annual precipitation below 70%?
- 2) What were the temperatures during the dry years?

**See page 2 for the
answers...**



Texas Envirothon Coming to Junction

Article courtesy of James Murr,
Junction Eagle

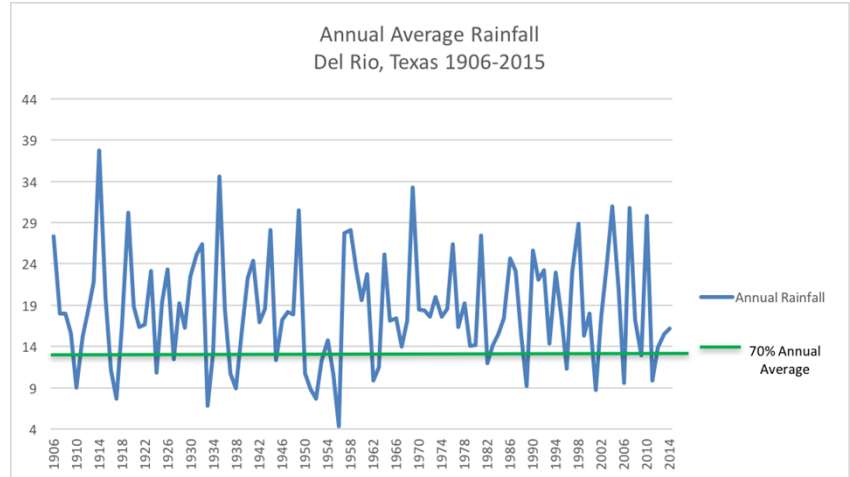
The Texas Envirothon is coming to Junction in 2017 as part of a national program that has been described as "North America's largest and most academically challenging high school environmental competition." This event involves competitions at state and national levels. To date, there have been 50,000 participants from 4,000 public and private high schools across North America.

The competition in Texas, during April 8-10, will be hosted by the Llano River Field Station (the Station) at Texas Tech University (TTU) in Junction. Texas students in grades 9 through 12 will be participating and the winning team will compete in the national competition during July 23-29 in Emmitsburg, Maryland, where scholarships and prizes will be awarded. In 2015, Texas placed third at the national competition.

[Read more...](#)

Could you highlight what years had annual precipitation below 70%?

The graph above right shows annual average precipitation for Del Rio (the closest weather station with readily available climate data). Over the 110-year period, annual precipitation has dropped below 70 percent of average 24 times, or 22%. Remember, it is estimated that recharge to the watershed drops to near zero when the 70% threshold is reached. Such a threshold was reached in 6 of 7 years in the 50s and has happened 6 times since 1982.

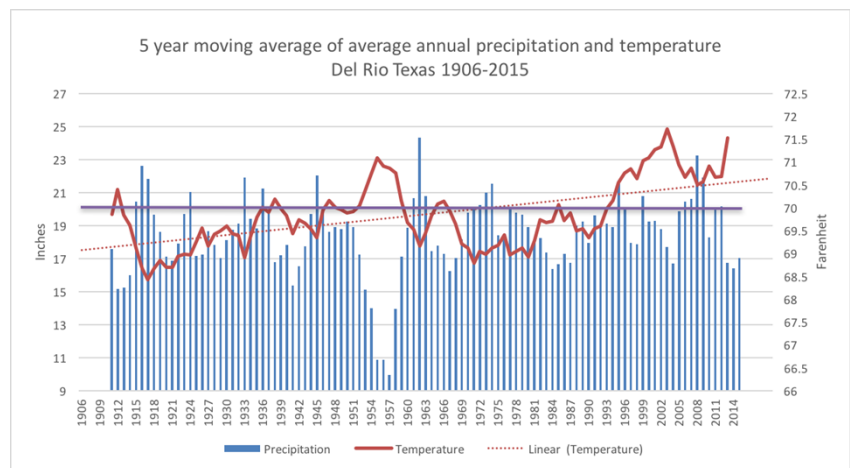


What were temperatures like during the dry years?

The graph on the bottom right shows annual precipitation and temperature in Del Rio as a 5 year moving average for ease of viewing. The purple line represents the average annual temperature of 69.9 degrees

Higher temperatures correlate with lower precipitation. During the 50s, average temperatures were above average for 7 years, with peak years of 71.4 in 1952 and 1954. More recently, temperatures were above normal 4 of 5 years between 2008 and 2012 with 2012 being the highest average ever at 73.2.

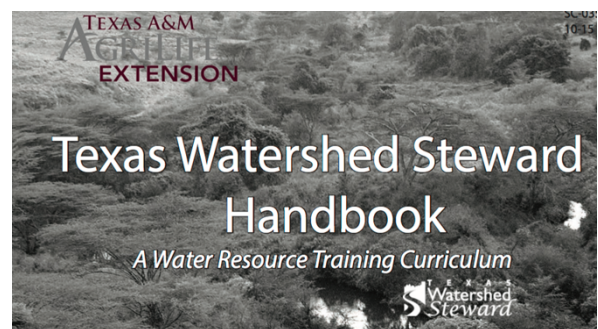
On average, annual temperatures have increased about 1.7 degrees since 1906-see dotted line.



Save the Date

The Texas Watershed Steward Program will be returning to Junction on May 6th from 8:30 to 12:30 at the Llano River Field Station.

The Watershed Steward program is a statewide educational program designed to improve the quality of Texas' water resources by educating and informing local stakeholders about their watershed.



The program is sponsored by Texas A&M AgriLife Extension Service, Texas State Soil and Water Conservation Board, and the Llano River Field Station in conjunction with the recently approved Upper Llano River Watershed Protection Plan.

[For more information and to register...](#)

Family Fun Events this weekend at South Llano River State Park



Life's better outside.®



Like us on Facebook!
Facebook.com/SouthLlanoRiver

Family Park Programs

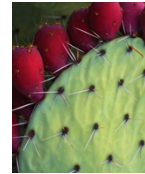
South Llano River State Park

Phone: (325) 446-3994

Plants and People!

Saturday, January 28th, 10:00 am - 11:00 am

Meet at the Fawn Trail parking lot
(behind Park Headquarters)



Join us for an easy trail walk, as we find out how people in this area have used local plants historically for food, medicine, and more! Good walking shoes and drinking water are recommended, and please dress for the weather.

All ages welcome!

Geocaching 101

Saturday, January 28th, 3:00 pm - 4:00 pm

Meet at the Walk-in Campground parking lot



Join us for Geocaching, a high-tech treasure hunt you can do anywhere in the world using a GPS unit or your smartphone! Loaner GPS units will be provided for this activity. Good walking shoes and drinking water are recommended. All ages and skill levels welcome!



Birding 101

Sunday, January 29th, 10:00 am - 11:30 am

Meet at the Acorn Blind

(down the path from the restrooms, between campsites 39 and 41)

Come birding with the park ranger! We'll share binocular and bird ID tips, sit in the blind for a bit, and then take a short walk to see what birds are around.

Binoculars provided, or bring your own. Good walking shoes and drinking water are recommended. All ages and skill levels welcome!

Park programs are open to the public and free with park entrance fee